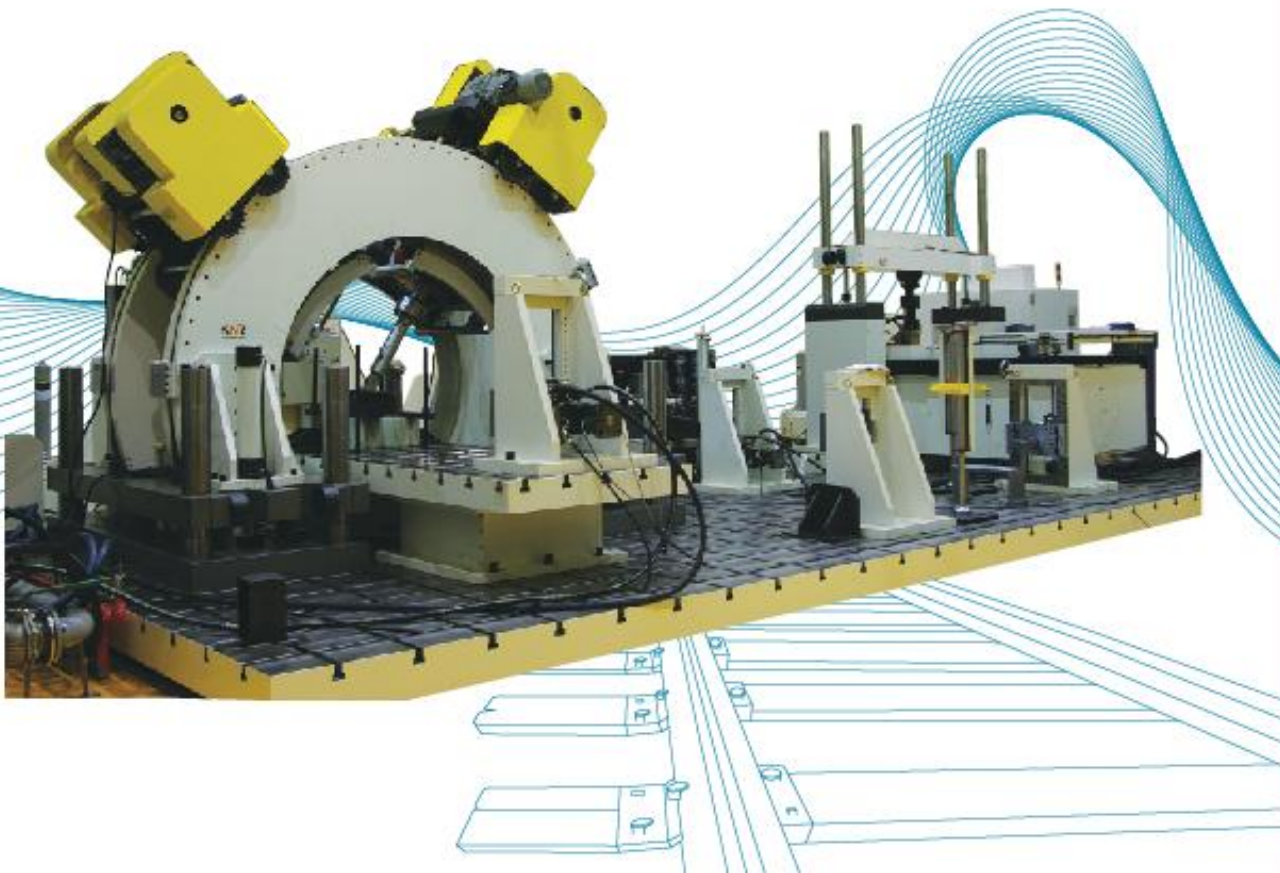


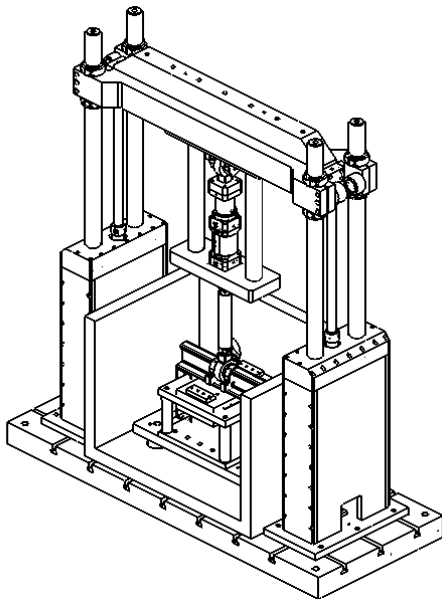
Multi –axial Fatigue Testing For Rail Fastening System & Components

Multi-axial fatigue testing system for rail fastening system & components-a hydraulic actuating system to test the static and dynamic performance of a rail fastening system & components in laboratory.



The testing system should be composed of hydraulic actuators [250kN(2sets), 100kN(2sets), 50kN(1set), 25kN(1set)], test bed, U-frame, portal frame, side frame. U-frame should contain two 250kN and one 100kN hydraulic actuators. The other hydraulic actuators should be installed in portal frame and side frame.

Component	Specifications	Component	Specifications		
Hydraulic Actuator	Static Force Rating	±250kN , ±100kN, ±50kN , ±25kN	Temperature Range	-20℃ ~ 100℃	
	Dynamic Force Rating	±200kN, ±80kN ±40kN, ±20kN	Humidity Range	30%RH to 98%RH	
	Dynamic Displacement	±75mm	Environmental Chamber	Inner Space	1400x1000x1000
Swivel Joint	Static Force Capacity	±350kN , ±150kN, ±50kN , ±25kN		Weight of specimen	±3.0% RH Max
	Dynamic Force Capacity	±250kN , ±100kN, ±70kN , ±35kN		Rate of cooling	5.0℃/min in empty chamber
	Swivel Angle Tilt angle	±90 ±7	Servic Manifold Distributor & Hose	operation	21MPa(3000psi)
Hydraulic Power Supply	Flow Rate	350lpm at 210bar 116lpm 3station ass'y		Filtration	3Micron
	Electrical voltage	380V, 60Hz, 3Phase			

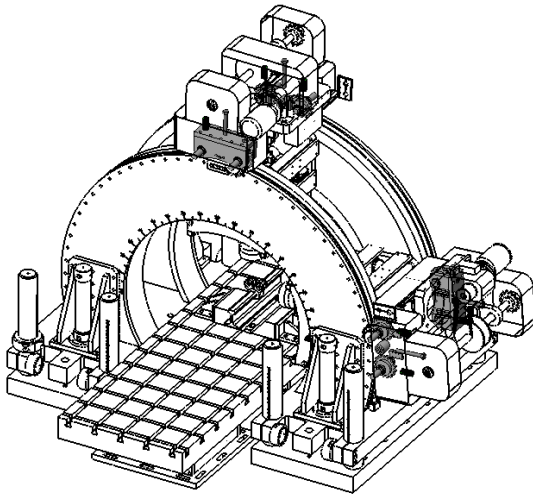


Portal Frame

- Force rating : More than 150kN
- Working height : 2,200mm
- Up & Down Stroke : 1000mm
- Reaction Frame Stiffness : Max. Displacement is 0.5mm
- Frame Natural Frequency : 20Hz
- Basic Space : 1800mm(inner)
- T-slot mount

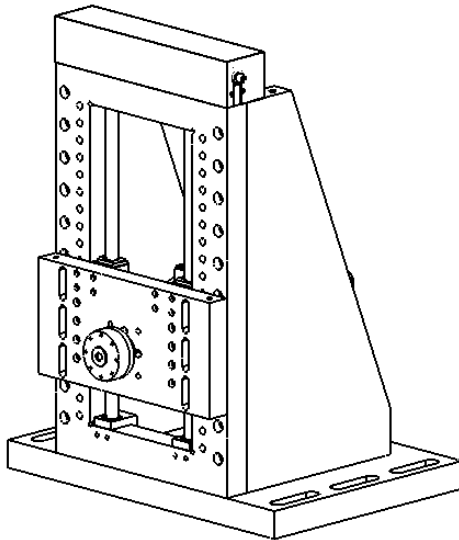
Environment Chamber

- Inner space : 1400x1000x1000
- Temperature range : -20 ~ +100℃
- Humidity range : 30~98%
- Weight of specimen : 200kg
- Temperature profile control



U-Frame

- 3 axial test system
- Capacity : 250kN
- Max. Displacement : $\leq 0.5\text{mm}$
- Up & Down Stroke : 500mm
- Test bed size : length 3400mm, width 1200mm
- Moving angle : $0\sim 90^\circ$, Resolution 0.5°
- T-slot mount
- Anti-rust post treatment



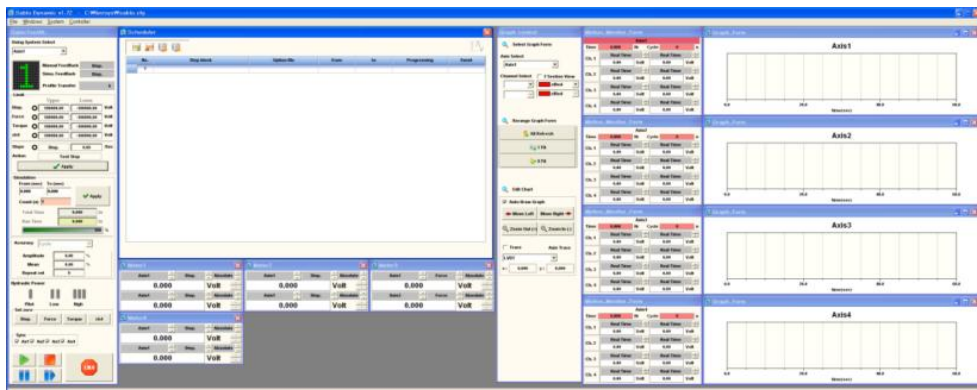
Side Fixture

- Capacity : 100kN
- Max. Displacement : $\leq 0.5\text{mm}$
- Vertical Stroke : 200mm to 600mm
- Actuator Mounting Method : Front & Rear
- Moving Type : Handle Screw Type ,
Gear Box Cover included
- T-slot mount
- Actuator Balancer



Digital Servo-Controller

- 4 control channels
- Ethernet communication
- PIDF control parameters tuning.
- 1kHz for DDC loop closure of Servo control.
- Sine, ramp, square and random signal
- Data transfer is possible in ASCII, MS Excel, MS word and lotus formats.
- Transducer conditioner for AC or DC transducers.
- All hardware adjustments and settings are to be controlled through software.
- Full scale engineering unit values, and control optimization settings.
- CAN network device for control of ignition and speed.

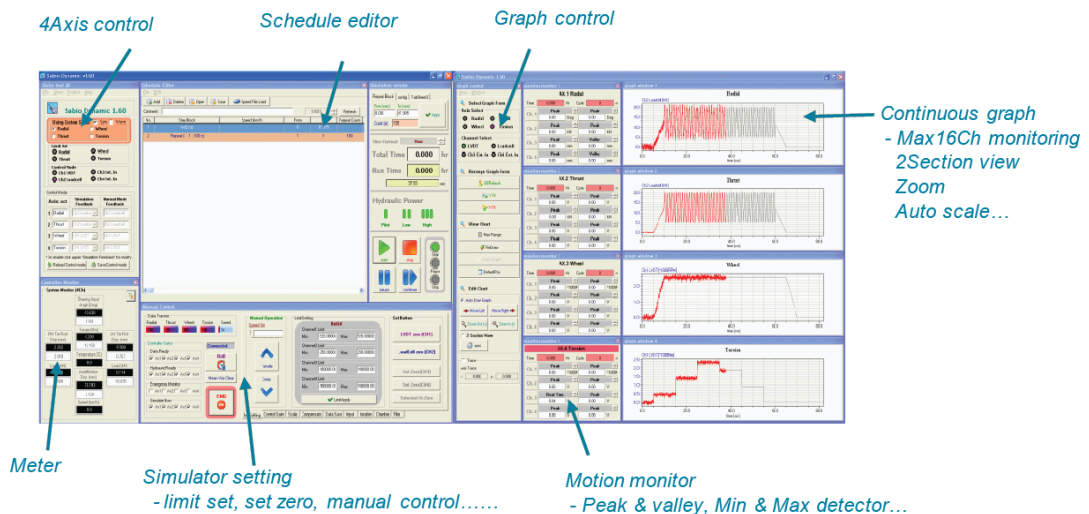


Control Software

- Display for test specific information
- Saving and loading of gains, limits, and some conditions
- Time based runtime plot with auto scaling and zooming
- Creatable test sequence manager
- Mathematical transformations are calculated by software
- Dual monitor display
- Automatic Data Acquisition, Storing and Display
- Monitor Test Program in Progress
- User Defined Display of all Data and Graphs sets
- CAN interface
- EPS error signal detection
- Monitoring of environmental chamber
- Road load profile regeneration of EPS

Additional function

- User passwords for security
- Report generation with customized template
- Example test methods in wizard
- Interactive user learning CD



Data process

- Other supported data formats: CSV, ASCII, Rigsys
- Interactive graphical analytical process builder
- Intrinsicly multi-file, multi-channel, multi-format
- Processes can be saved as templates and re-used
- Temporary data within a process available for review